

## Rotary Placer

The RP series placers are ideal for feeding and inserting products such as CDs, DVDs, keyfobs, sachets, trays, windows, security tags, magnets, coupons, cards and many other items.

These servo-controlled Rotary Pick & Place feeders have a height-adjustable mobile base which makes them compatible with virtually all conveyor-based mailing, packaging and folder gluing equipment.

The suction arms are articulated and have the ability to rotate 360°. This ensures the suction cups are in the best position to pick up the item to be placed regardless of its shape, and then to place it onto the carrier. Together with the advanced servo technology, this is what sets the Pack-Smart machines apart from more conventional Pick-and-Place feeders.

A simple touchscreen interface enables on the fly adjustment and ethernet connectivity gives access to jobs on a central server or network. This also enables remote diagnostics for unparalleled support.

Verification options are available to assure complete job integrity, including all popular barcode and OCR fonts. Other options include a realignment module, CD hopper and dual stream kit.

The most popular model in the UK is the four armed RP912 which can feed items such as sachets, plastic cards, keyfobs up to 300mm or two products dual stream up to 125mm wide.

### RP 911 product sizes

Minimum 25mm x 25mm

Max. 178mm in travel direction x 152mm across.

### RP 912 product sizes

Minimum 25mm x 25mm

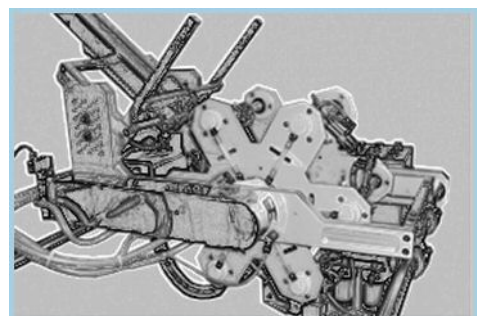
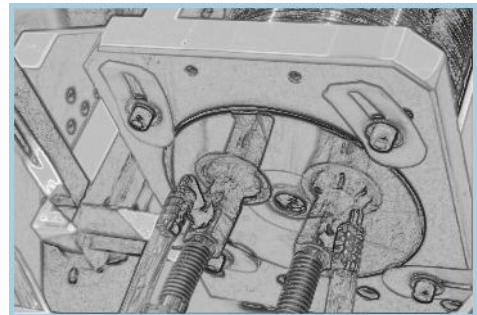
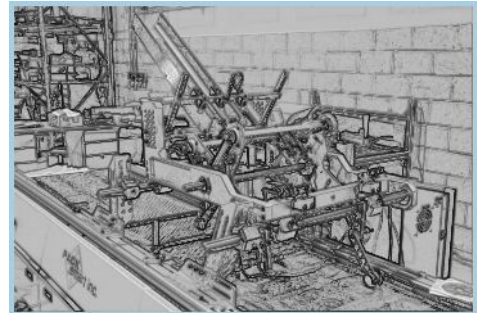
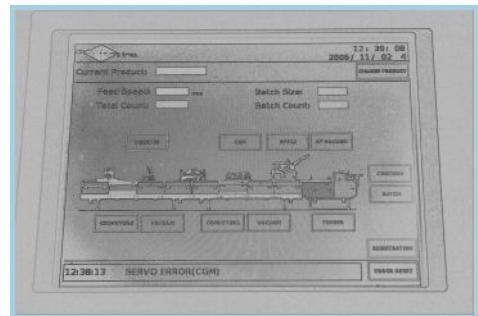
Max. 178mm in travel direction x 305mm across.

### RP 924 product sizes

Minimum 25mm x 25mm

Max. 178mm in travel direction x 610mm across.

All Rotary Placer models are available in 4 or 6 arm configuration.



# RP Series

## RP Standard Features

- High torque brush less servomotor
- Colour touch screen operator interface
- Planetary gear system
- On the fly" placement position adjustment
- Electronic speed synchronization module
- Line speed encoder with mounting bracket, wheel and cables
- Product sensor (fibre optic)
- Maintenance and production data menus
- Remote emergency stop terminal
- Vacuum release adjustment
- Vacuum cup angle adjustment
- Self contained dual vacuum system, 1HP and 1/3HP vane pumps
- Missing product input option (sensor optional)
- Low magazine input option (sensor optional)
- Top safety guard with interlock
- Lower safety guard permanent
- Dual suction cup system
- Pressurized blow off feature
- Universal magazine

## RP Optional Features

- Autoloader
- Batch counters
- Secondary alignment modules
- Mobile stands
- Vacuum transport conveyors
- Pneumatic escapements
- Carrier registration modules

Product Size	RP911	RP912	RP924	RP944
Min. Width:	25mm	25mm	25mm	25mm
Min. Length:	25mm	25mm	25mm	25mm
Max. Width:	152mm	305mm	610mm	1100mm
Max. Length:	178mm	178mm	178mm	178mm
Max. Thickness:	12 mm	12mm	12mm	12mm
Placement Accuracy:	±1.6mm	±1.6mm	±1.6mm	±1.6mm

## Realignment Module

- Improves placement accuracy by preventing skew.
- Reduces setup times.
- Better product control.
- Module speed is exactly matched to host speed.
- The item to be placed has less distance to travel.
- Using this system, the advantages of both pick and place and friction feeding are attained.
- Dual streaming of items is still possible as four chains are included as standard.

## Space Requirement on host machine

(dependent upon machine and configuration)

Across the belt:	940mm
With realignment module:	1000mm in running direction
Without realignment module:	760mm in the running direction

The purpose of this brochure is to provide guidelines. It is always advisable to submit samples for evaluation.  
We reserve the right to make technical changes.