



t +44 (0) 1727 899 900

e info@uniquefinishing.co.uk

f +44 (0) 1727 899 901

w www.uniquefinishing.co.uk

Cross-Core Labels

23,000 labels, 200,000 labels or even 400,000 labels on a reel? Which would you choose?

A standard reel is 533m long.

A Cross-Core reel is 3,810m long.

A Jumbo Cross-Core reel is 7,620m long. That's 4.7 miles of labels!

With the ability to run on almost all labelling equipment, and prices that compete with flat roll labels, it's almost too good to be true.

An example... A card personalisation line is running at 30,000 cph applying 19mm x 6mm scratch off labels. The average changeover time for a roll of labels is 6 minutes. With 22,900 labels on a reel, the machine must be stopped every 50 minutes to change the label reel. Over an 8 hour shift, that's one hour of lost production!

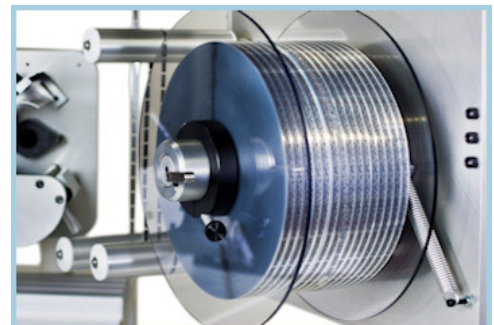
Factor in stoppage time for when your paper reel breaks and it's an even worse scenario. Web Technology reels use polyester liners and are almost unbreakable. They just don't snap!

So, swap that flat roll for a Cross-Core reel with 200,000 labels on a polyester liner. It needs changing every 7 hours, just once per shift, increasing your productivity by over 10%!

Wound like a fishing reel, Cross-Core reels are wider than flat rolls and the same diameter. This means only a few modifications to your labelling equipment are needed to run Cross-Core reels and initial setup is no different to standard flat rolls. Flat rolls and Cross-Core rolls can be interchanged in minutes, although we guarantee you won't want to ever run flat rolls again!

Most popular sizes and patterns are available and we can create custom labels for any special formats. All label types can be wound in Cross-Core format, including 3 track Hi-Co / Lo-Co magstripe labels.

Flat rolls and paper liners belong in the past; there's no excusing them and no reason to continue using them. Cross-Core labels increase your productivity which in turn increases your profitability. All without requiring additional investment in equipment!



Reel specification:

Core ID: 76mm
Core OD: 101mm
Core Width: 76mm
Label Liner: 2.5 thou poly film
Label Face Material: 2 thou clear polystyrene

